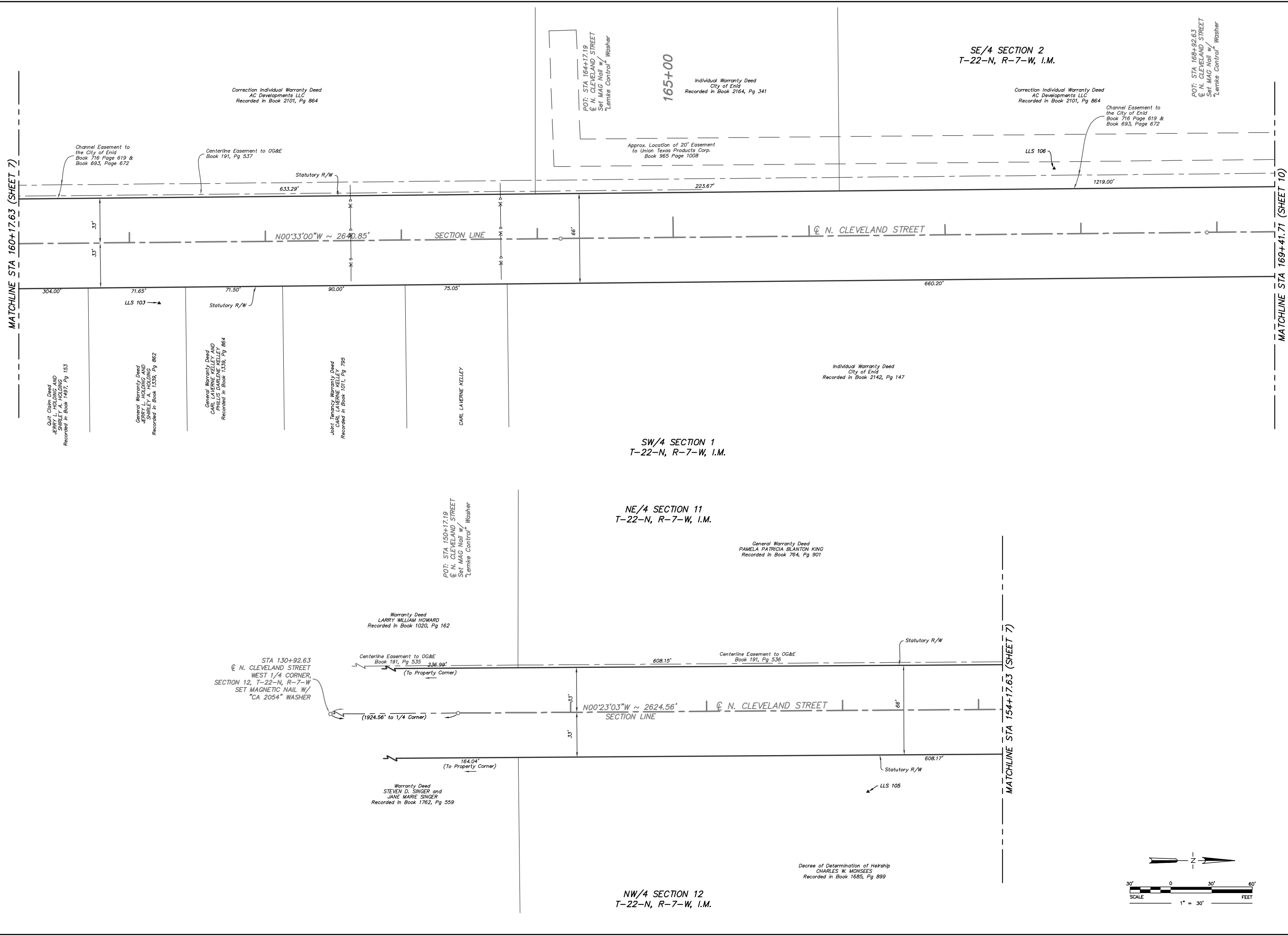


MATCHLINE STA 160+17.63 (SHEET 7)

MATCHLINE STA 169+41.71 (SHEET 10)



LEIMKE LAND SURVEYING, Inc.
 S L S L
 3028 BART CORNER DRIVE, NORMAN, OK 73072
 PH: (405) 366-8841 FAX: (405) 366-8840
 http://www.leimke-ls.com

Mark	Description	Date	Appr.
1.	Additional Topo STA 164+17 to STA 163+58	07/17	MB
2.	C/L CLEVELAND STREET	07/17	MB
3.	Revised Topo STA RT STA 158+49 to STA 159+63	07/20	MB
4.	C/L CLEVELAND STREET (Curb and Sidewalk)	07/20	MB
5.	Added Survey Data Sheets (Sheets 7 thru 11)	04/16	MB
6.	Revised Stationing of Centerline Alignments and all labels associated to the centerline stationing		

Surveyed By:	DR/CG
Drawn By:	TG
Approved By:	MB
Date:	04/02/2013
Scale:	1" = 30'
Project No:	13025

Project: TOPOGRAPHIC SURVEY
 PROPOSED ROAD IMPROVEMENTS
 INTERSECTION OF N. CLEVELAND STREET & W. CHESTNUT AVENUE
 ENID, OKLAHOMA
 Client: TETRA TECH, INC.
 119 N. ROBINSON AVENUE, SUITE 700, NORMAN, OK 73102

